

كفاءة المختبرات LABORATORIES PROFICIENCY

المؤتمر الخليجي الأول لكفاءة المختبرات
FIRST GCC CONFERENCE FOR LABORATORIES PROFICIENCY





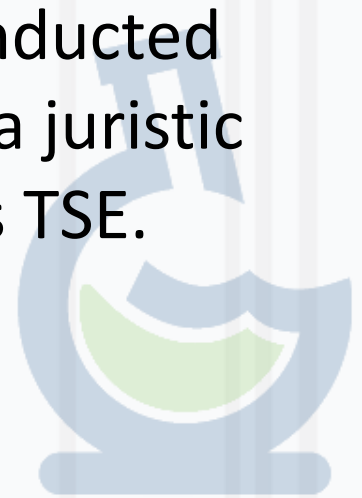
TURKISH STANDARD INSTITUTION

**TSE EXPERIENCE IN
PROVIDING PT PROGRAMS**



TSE GENERAL INFORMATION

- TSE has been established by the law numbered 132 dated 18.11.1960 for the purpose of preparing standards for every kind of item and products together with procedure and service.
- The Institute is a public founding which is conducted according to the special rules of law and has a juristic personality. Its abbreviation and trademark is TSE.



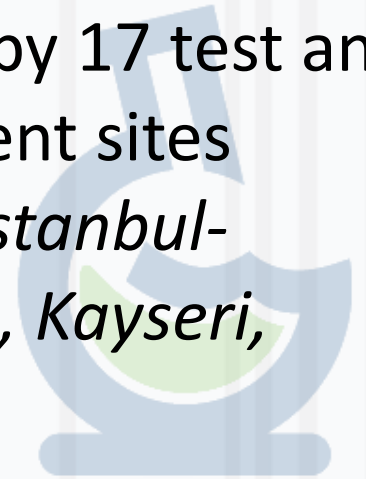
THE SERVICES CONDUCTED BY TSE

- Quality and System Certification
- Product and Service Site Certification
- Personnel Certification
- Test Laboratories
- Calibration Laboratories
- Inter Laboratory Comparisons
- Standard Preparation
- Research Planning and Coordination



TSE Headship of Test and Calibration Centre

- Headship of Test and Calibration Center is a department of TSE located in Gebze. TSE has approximately 50 years laboratory operating experience.
- Test and Calibration Center gives its services by 17 test and 3 calibration laboratories located in 10 different sites (*Ankara- City Center, Ankara- Ostim, Gebze, İstanbul- Pendik, İzmir, Bursa, Denizli, Manisa-Turgutlu, Kayseri, Çorum*)

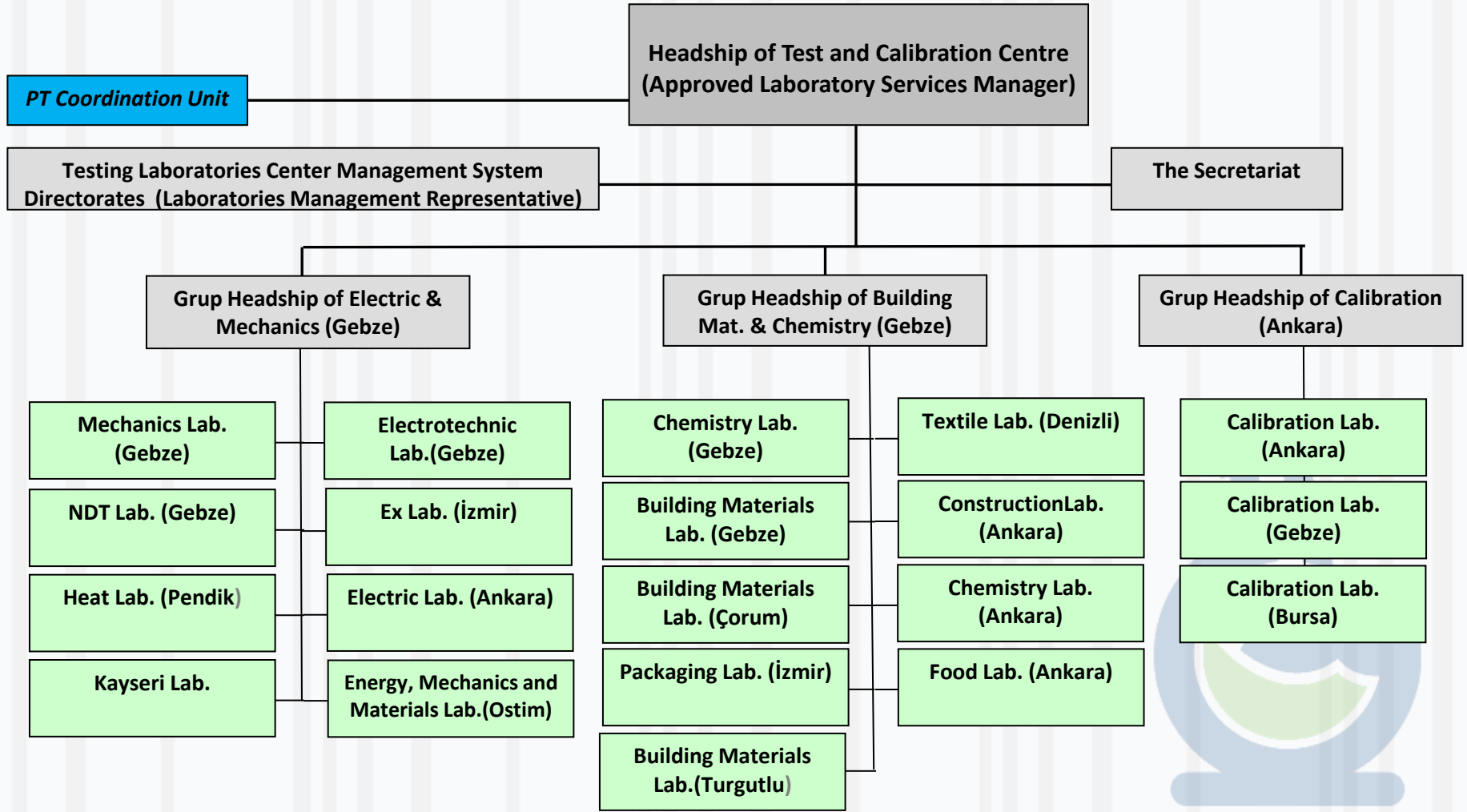


TSE Headship of Test and Calibration Centre

- Our laboratories show activity in the following fields:
 - Electrical - Electrotechnical
 - Mechanics
 - Heat and Simple Pressure Vessels
 - Building Materials
 - Chemistry
 - Textiles
 - Packaging
 - Exproof materials
 - Food
 - Non-destructive testing
 - Calibration



Organization Scheme of Test and Calibration Center

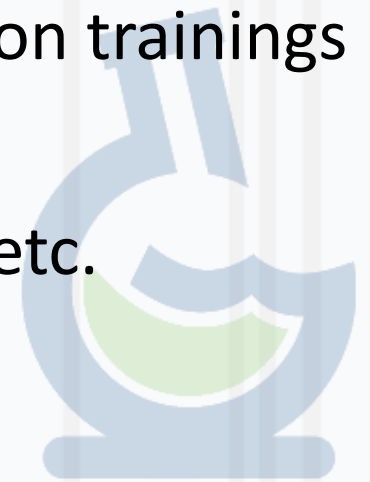


TSE UNITS ON MAP



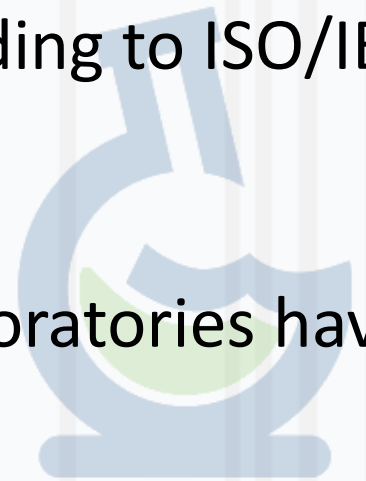
Provided Services of Test and Calibration Centre

- Test services
- Calibration services
- Training services
 - Theoretical and Practical test and calibration trainings
 - Measurement uncertainty
 - ISO/IEC 17025, ISO/IEC 17043, ISO 15189 etc.
 - Non-destructive testing
- Organizing ILC/PT schemes



Accreditation

- All of our laboratories work according to ISO/IEC 17025 laboratory accreditation standard. All laboratories except Çorum lab. are accredited by Turkish Accreditation Agency(TURKAK)
- TSE successfully passed the accreditation inspection performed by TURKAK February 18-19 according to ISO/IEC 17043 Standard as a PT provider.
- Furthermore, Electrical - Electrotechnical laboratories have also CB, HAR, CCA and ENEC accreditations



TSE PT ACTIVITIES

- TSE's laboratories organized PTs according to their and customer needs from 2003 to 2009.
- Aim;
 - ISO/IEC 17025 requirements
 - Observing and evaluating laboratory performance
 - Quality assurance



TSE PT ACTIVITIES

- This period (2003-2009);
 - Due to TS EN ISO/IEC 17025 Accreditation, laboratories already competent to making the tests or calibrations and storage the samples. Also they already have enough experience about samples.
 - They practice and get more experience about;
 - Supplying homogenous and stable samples
 - Transportation of the samples
 - Packaging
 - Distribution
 - Statistical Calculations



TSE PT ACTIVITIES

- In year 2009, TSE inter laboratory comparisons and proficiency tests were started to organize from one roof. Before then each laboratory organized PTs about its field.
 - TSE 2009 PT Program primarily aimed to contribute to the improvement of laboratory infrastructure of our country. Main topics of this program are:
 - Building Materials
 - Textile
 - Metallic Materials
 - Electromagnetic Compatibility
 - Chemistry (Plastics)
- There was 73 participants in 36 methods in 2009 program.



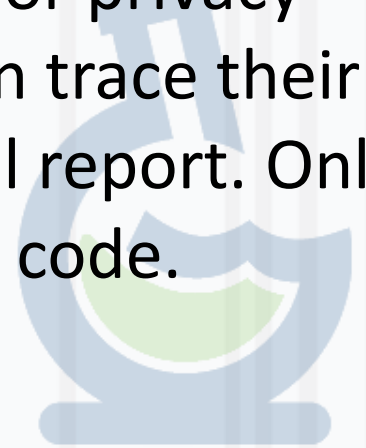
TSE PT ACTIVITIES

- In year 2010, TSE PT Coordinate Unit was established. They set up quality system according to «TS EN ISO/IEC 17043 Conformity assessment - General requirements for proficiency testing» standard, started to implement it in the same year. Since then TSE organizes PTs according to TS EN ISO/IEC 17043 Standard.
- International participation is provided by announcing our programs at TSE web-page, EPTIS ([http://www.eptis.com](#)) webpage, GSO web-page.



TSE PT ACTIVITIES

- Based on the Privacy and impartiality principle, Advisory and Assessment Board is established out of TSE. In the structure of established board there are statistical expert (academics) and technical expert (academics/ industrialist).
- According to TS EN ISO/IEC 17043 Standard, for privacy participants are given Privacy Codes. They can trace their performance values with this code in the final report. Only the participant and PT Coordinator know this code.



TSE PT ACTIVITIES

- Proficiency Test Program of the Year 2010
- Main topics:
 - Building Materials
 - Chemistry
 - Textile
 - Electricity
 - Metallic Materials
 - Packaging
 - Food
- There was 124 participants in 74 methods in 2010 program.



TSE PT ACTIVITIES

- 2011 Number 1 Proficiency Test Program:

Main topics:

- Building Materials
- Electrical Engineering
- Food
- Chemistry (Plastic)
- Metallic Materials

There was 95 participants in 11 methods in the program.



TSE PT ACTIVITIES

- 2011 Number 2 Proficiency Test Program:
- Main topics:
 - Building Materials
 - Textile
 - Food
 - Electrical Engineering
 - Metallic Materials
 - Packaging
 - Chemistry
 - Non-Destructive Testing
- There was 123 participants in 49 methods in the program.



TSE PT ACTIVITIES

- 2012 Number 1 Proficiency Test Program:
- Main topics:
 - Textile
 - Metallic Materials
- There was 17 participants in 5 methods in the program.



TSE PT ACTIVITIES

- 2012 Number 2 Proficiency Test Program:
- Main topics:
 - Door - Window
 - Glass
- There was 9 participants in 4 methods in the program.



Difficulties encountered

- Sample
 - Finding Homogeneous and Stable Samples
 - Distributing Heavy Samples
 - Temperature or Humidity etc. Requirements during distribution
 - Sending samples internationally



Difficulties encountered

- Participant
 - Miss filled application forms
 - Miss filled result record sheets
 - Participants' noncompliance with the timeline
 - Could not communicate with Participant's contact person





THANK YOU VERY MUCH...

