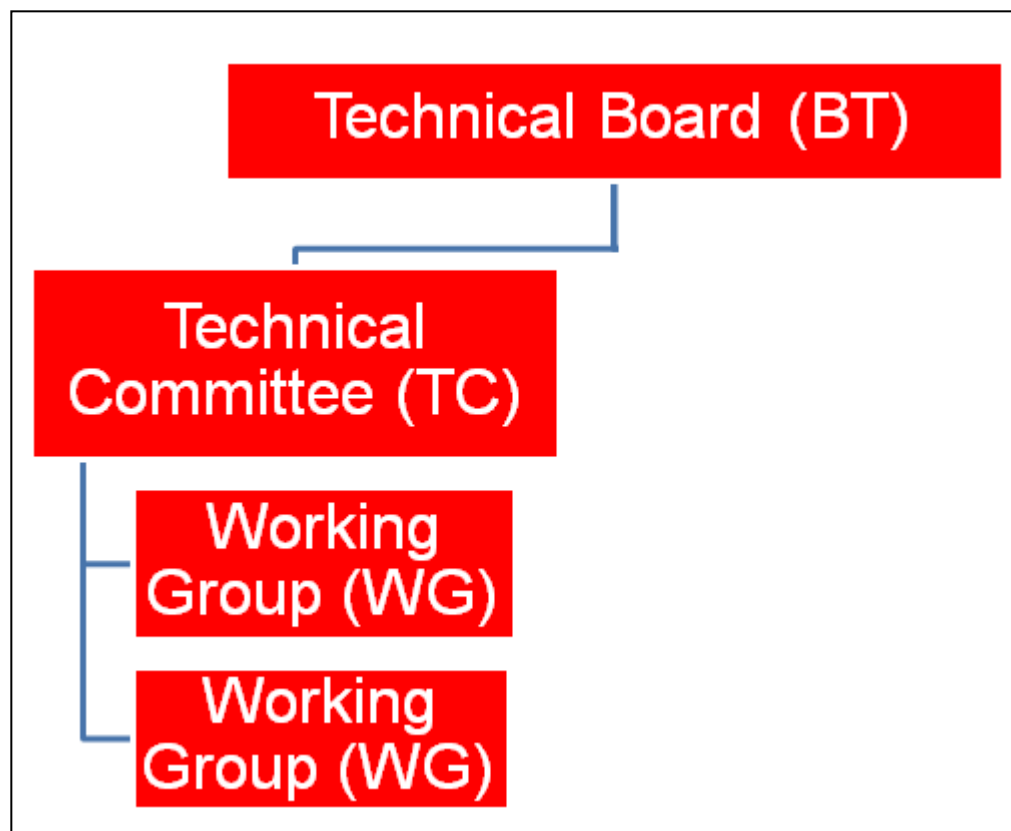


CEN and CENELEC technical structure

Alexandre della Faille de Leverghem
Programme Manager
CEN-CENELEC Management Centre

Introduction (1)



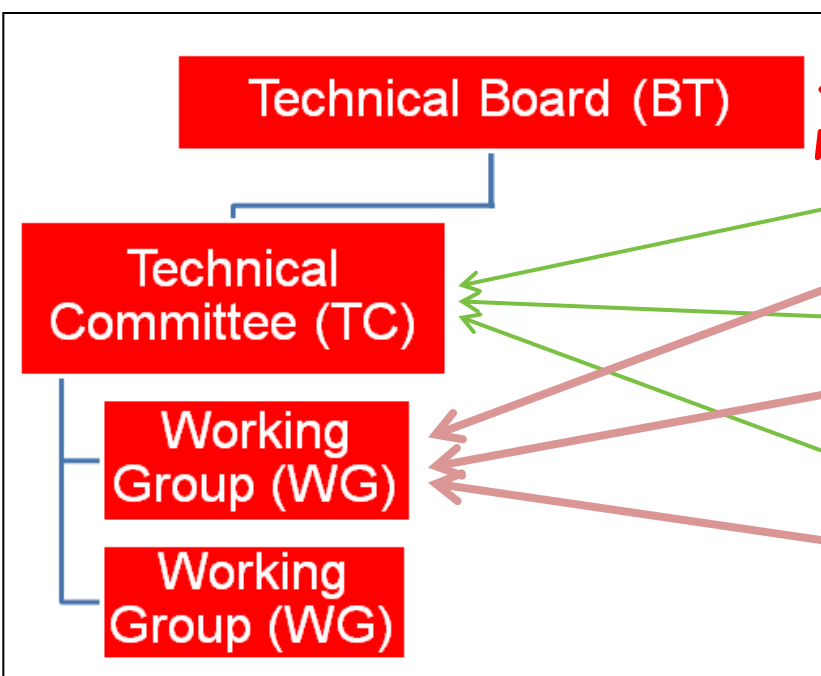
Technical policy

Work programme

Content of standards

CEN-CENELEC Internal Regulations

Introduction (2)



- ← Representative from the CEN or CENELEC Member
- ← National delegate(s)
- ← Individual expert(s)



Technical Board (1)



Technical Board (BT)

CEN/BT

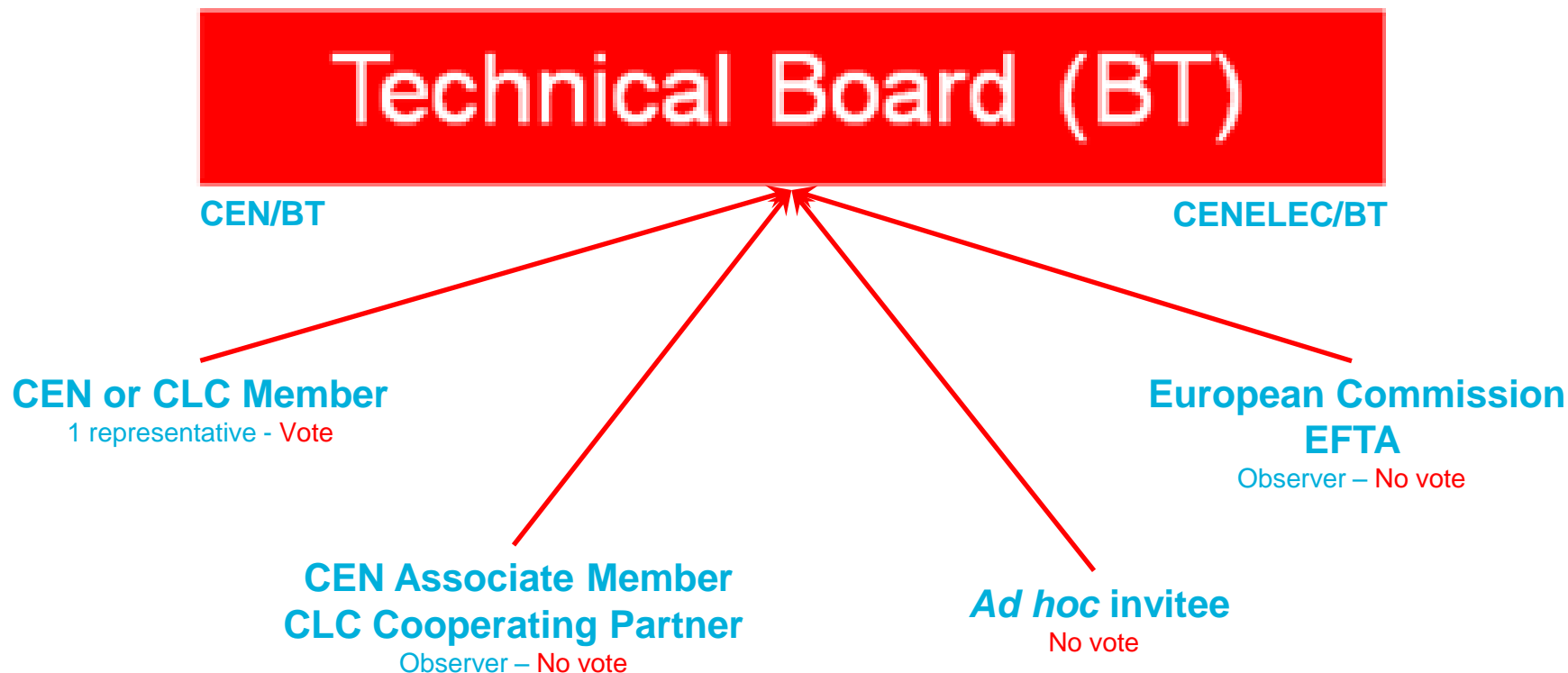
CENELEC/BT

Technical policy (rules)

Creates Technical Committees

Binding decisions when conflict/problems

Technical Board (2)



Technical Board (3)



Technical Board (BT)

CEN/BT

CENELEC/BT

Plenary meeting

2/year

Decision by consensus

Decisions by correspondence

Each week

4-week vote (TC creation: 3-month vote)

Restricted meeting (TCMG)

2/year

Decision on failed decisions by correspondence

Technical Committee (1)



**Technical
Committee (TC)**

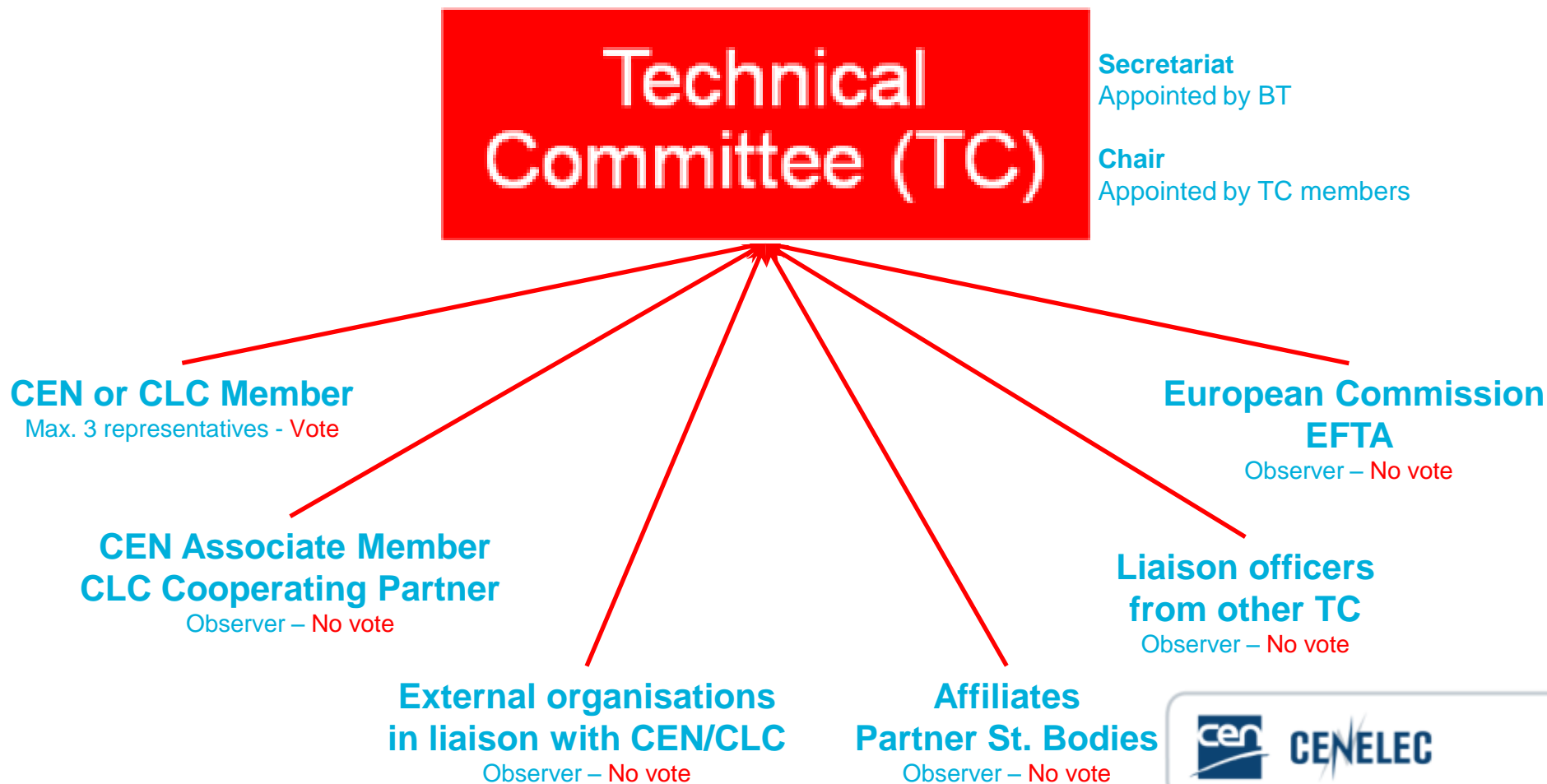
1 TC = 1 scope

Establishes work programme within scope

Creates Working Groups

Subservient to BT

Technical Committee (2)



Technical Committee (3)

Technical Committee (TC)

Plenary meeting

1/year

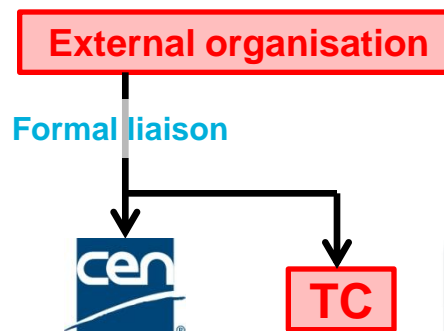
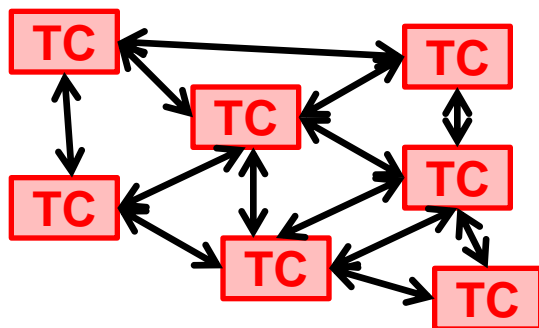
Decisions through vote

In plenary or by correspondence

Simple majority (for new work: weighted vote, 71% positive)

Liaisons

2 types



Working Group (1)



**Working
Group (WG)**

1 WG = 1 subject

Develops technical content of standards

Subservient to TC

Working Group (2)



Working Group (WG)

Secretariat (if any)
Approved by TC members

Convenor
Appointed by TC members

Individual experts from

Each CEN/CLC Member

CEN Associate Member / CLC
Cooperating Partner

Organisations in liaison with TC

European Commission EFTA

(Observers)

Individual experts from

Affiliates

Partner Standardization Bodies

(Observers)

Working Group (3)



**Working
Group (WG)**

As many meetings as necessary

Decisions through consensus

‘Scientific knowledge pooling’ – No advocacy/lobbying